

# Seven Oaks

BUSINESS PARK



[BolthouseProperties.com](http://BolthouseProperties.com)

*Bolthouse*<sup>SM</sup>  
PROPERTIES, LLC

# Seven Oaks

## BUSINESS PARK

### 276 Acres Mixed-Use Commercial Development

The Seven Oaks Business Park is located within Bakersfield's premier Seven Oaks community as a part of the West Ming Specific Plan between Buena Vista Road and South Allen Road.

The exclusive plan allows for flexible offerings to create a unique office and retail business park to suit the needs of users. Synonymous with quality, each project is executed with the highest standards to meet the customer's needs in a timely and cost-effective manner.



**1-Acre to 50-Acre Parcels Available**



**Build-to-Suit Lease or Sale Opportunities**



**Turn-Key Buildings for Occupancy**



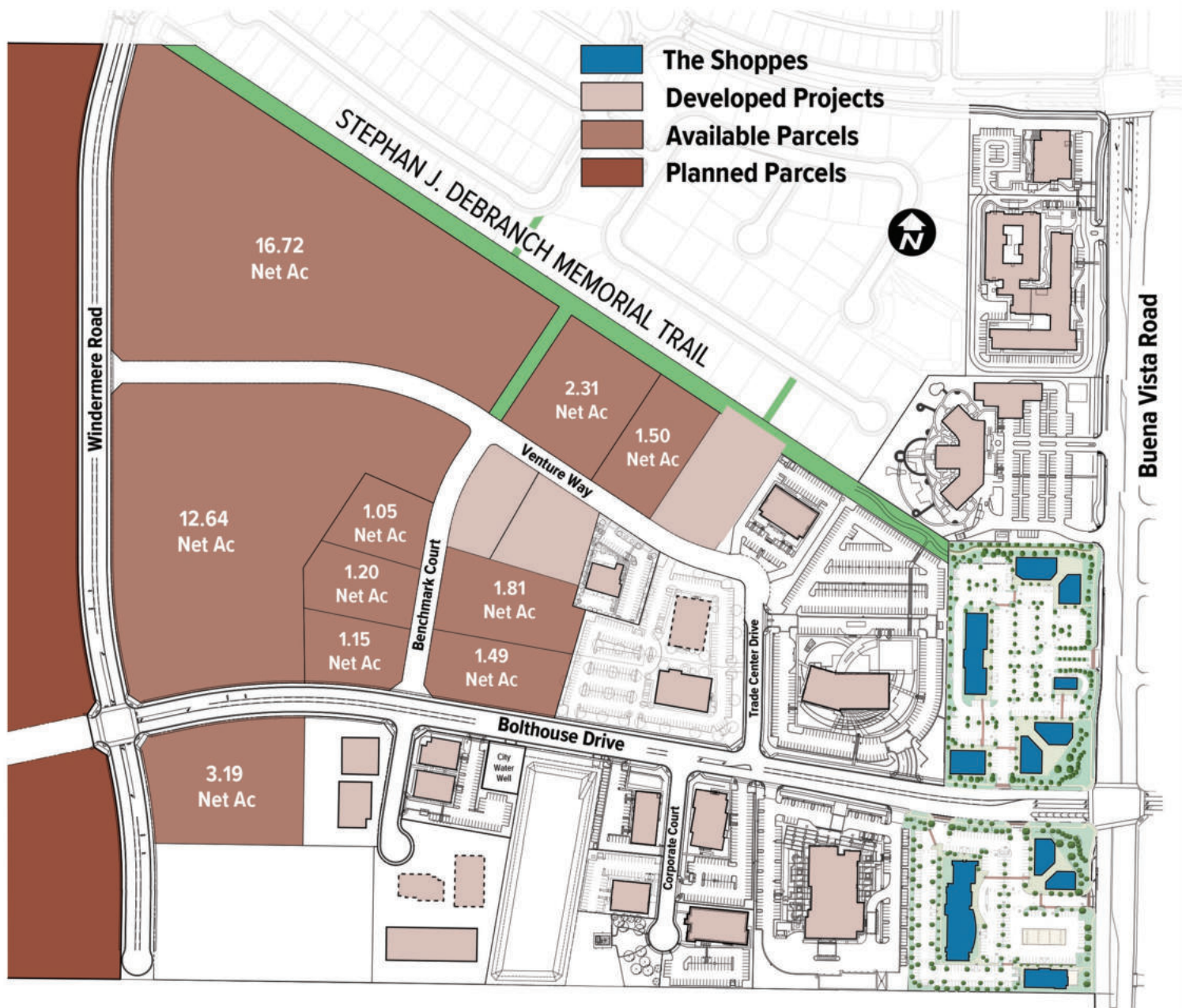
**Lush Landscaped Open Spaces Throughout**



**Linked Trails for Pedestrian Access  
to Retail Services and Residential**



# Business Park Map



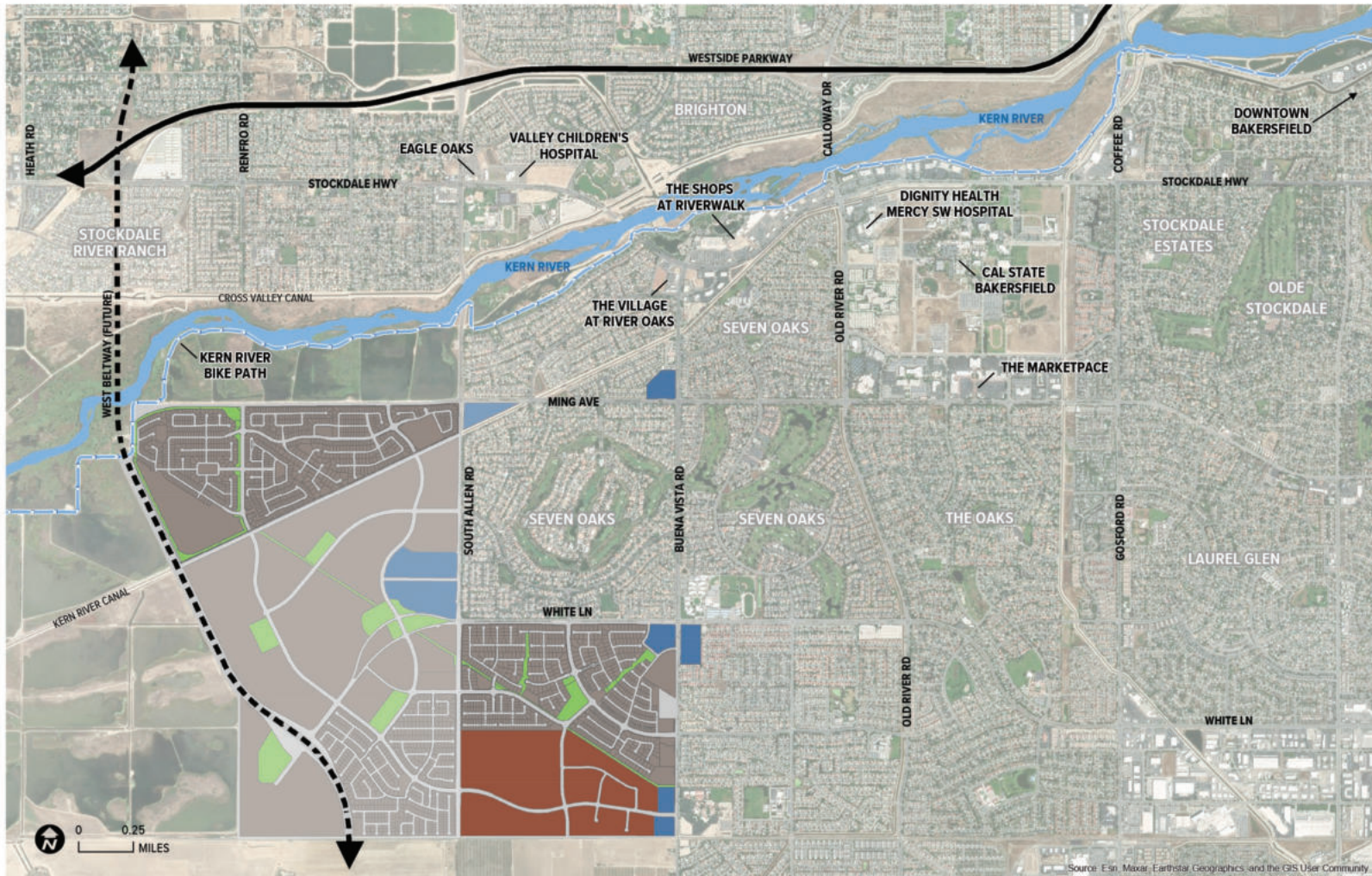
## Seven Oaks BUSINESS PARK



## THE SHOPPES Seven Oaks Business Park



# Location Access



OFFICE | COMMERCIAL

*Seven Oaks*  
BUSINESS PARK

RESIDENTIAL COMMUNITIES

BELCOURT *Seven Oaks* HIGHGATE *Seven Oaks*  
PARK SQUARE at *Seven Oaks*  
A FULLER APARTMENT HOMES COMMUNITY

RETAIL CENTERS

THE SHOPPES *Seven Oaks Business Park* BELCOURT VILLAGE *Grand Island Village*  
MUSTANG SQUARE









FUTURE RESIDENTIAL



FUTURE RETAIL

# Demographics

Source: Esri

 Population	Residential	
	15,508 1 mile	70,822 3 miles
	Workforce	
	2,140 1 mile	21,188 3 miles
 Average Household Income	\$162,305 1 mile	
	\$154,907 3 miles	
 Households	4,580 1 mile	
	23,071 3 miles	
 Average Home Value	\$454,901 1 mile	\$474,897 3 miles
 Median Age	34.1 Years 1 mile	35.9 Years 3 miles
 Education Attainment	Bachelor's Degree	
	29.7% 1 mile	25.1% 3 miles
	Graduate Professional	
	13% 1 mile	15.3% 3 miles
2024 Average Spent Per Household		
	1 mile	3 miles
Entertainment/Recreation	\$5,930.84	\$5,604.69
Food At Home	\$9,834.67	\$9,540.31
Food Away From Home	\$5,768.67	\$5,467.12
Personal Care Products & Services	\$1,382.99	\$1,342.23

# Market Highlights

1/4 of building permits issued in the city of  
Bakersfield are within the Seven Oaks Master Plan

•

Steady Employment, Economy & Population Base

•

9th Largest City in California

•

Energy Capital of the Nation

•

2nd Ranked Agricultural Industry in the Nation

•

Centrally Located between Los Angeles & Fresno



# Live. Work. Play.



## Premier Residential Communities

A wide variety of dwelling options including apartment, single-family and custom homes are located near the Seven Oaks Business Park



## Life Conveniences

Nearby amenities to meet business lifestyle needs such as fast casual and fine dining, self-care, and shipping, printing and mail services

- The Shoppes at Seven Oaks Business Park
- Belcourt Village
- Grand Island Village
- Mustang Square



## Health & Wellness

- Within walking distance is the 8.2-acre Belcourt Park
- Neighboring services include urgent care, family dental practice, physical therapy, and cyrotherapy



## Stephan J. DeBranch Trail

The integrated trail system links to the Seven Oaks Business Park to the surrounding residential communities

- Belcourt Seven Oaks
- Park Square Seven Oaks
- Highgate Seven Oaks (in time)



## Neighborhood Academic Institutions

- Valley Montessori Academy
- Highgate Elementary School
- St. John's Lutheran School
- Stockdale High School
- Trinity Preschool

Explore more at [ExperienceSevenOaks.com](https://ExperienceSevenOaks.com)

# *Seven Oaks* Master Plan

For more than twenty years, Seven Oaks has been the premier master-planned community in Bakersfield. Carrying on the legacy of Seven Oaks as the master-planner, Bolthouse Properties has carefully woven a lifestyle of live-work-play into the fabric of the community.

The elegant architectural design and close attention to quality and detail found throughout Seven Oaks reflect Bolthouse Properties' commitment to building a community focused on excellence and lifestyle.

## **The Seven Oaks Master Plan encompasses:**

Approximately 1,800-acres (7,450 units) of premier residential living

A 276-acre business park

Over 60-acres of conveniently located retail centers

Over 90-acres of community and private parks

Lusciously landscaped trails and paseos

Neighborhood schools



# Market Highlights

1/4 of building permits issued in the city of  
Bakersfield are within the Seven Oaks Master Plan

•

Steady Employment, Economy & Population Base

•

9th Largest City in California

•

Energy Capital of the Nation

•

2nd Ranked Agricultural Industry in the Nation

•

Centrally Located between Los Angeles & Fresno



# Our Team

At Bolthouse Properties, our bestselling service is our focus on **client relationships**. We provide full-service development support to our clients, whether they're pursuing a land purchase, build-to-suit project, or retail opportunity. We view our occupants as business partners and position their projects for success.

## **Bolthouse Properties' full-service in-house team includes:**

- Project Consulting
- Project Planning & Entitlements
- Construction & Facilities Management
- Civil Engineer
- Budget Management
- Lease Management
- Master Plan Marketing Support





# A COLLABORATIVE PARTNERSHIP

"By believing in the success of our initiative, Bolthouse Properties has made Valley Montessori Academy's growth and expansion a reality. Their support has enabled us to make our dream of offering high quality, progressive education to many more Bakersfield families come true. We are proud to collaborate with Bolthouse Properties and contribute to the growth of Seven Oaks."

*Anna Dulcich and Oxana Raimondo  
Valley Montessori Academy*

---

## **Your Innovative Commercial Space Awaits**

**Retail | Office | Corporate Campus**

**276 Acres of Mixed Use Commercial Development**  
**1-Acre to 50-Acre Parcels Available • Build to Suit**  
**Land for Purchase or Lease**

# About Us

Bolthouse Properties is an agricultural land and real estate investment company founded and committed to the principals of integrity, honesty, humility, and compassion. These values are inherent in every activity and every relationship - with the people and our community.

What sets Bolthouse Properties apart is a commitment to:



Humility



Integrity



Responsibility



Tolerance

📍 11601 Bolthouse Drive, Suite 200, Bakersfield, CA 93311

✉ 4605 Buena Vista Road, Ste. 600, PMB 802 Bakersfield, CA 93311

📞 Phone: **661.323.4005** | Fax: **661.323.4006**

🌐 **BolthouseProperties.com**

---

## Brokerage Firm Contact:

**Mark J. Smith, SIOR | Principal**

C: 661.616.3561 • O: 661.862.5454 • marks@asuassociates.com • CA RE #00632003

**Martin J. Starr | Principal**

C: 661.616.3567 • O: 661.862.5454 • mjstarr@asuassociates.com • CA RE #01179469

**Matthew E. Starr, SIOR, CCIM | Principal**

C: 661.616.3570 • O: 661.862.5454 • matthew@asuassociates.com • CA RE #01367855

